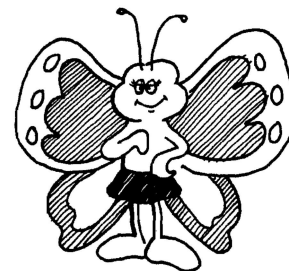


Why Didn't the Butterfly Go to the Dance?



Write each answer, then mark it in the answer column. For each set of exercises, there is one extra answer. Write the letter of this answer in the corresponding box at the bottom of the page.

1	$-5 + 2$	Answers:	8	$9 + -4$	Answers:								
	$7 + -3$	(V) 4 (C) -3		$3 + -7$	(S) 9 (A) -4								
	$-4 + -6$	(A) -8 (K) -10		$-6 + 15$	(I) 12 (U) 5								
2	$1 + -8$	(F) 7 (L) 13	9	$-7 + 1$	(A) 8 (T) -11								
	$-6 + -12$	(U) -7 (J) -18		$-5 + -12$	(P) -6 (E) -17								
	$-2 + 9$			$9 + -20$									
3	$-7 + 6$	(G) -1 (N) -3	10	$-4 + -3$	(C) -7 (R) 1								
	$5 + -8$	(Y) 25 (H) 18		$-4 + 3$	(T) 7 (O) -1								
	$12 + 13$			$4 + -3$									
4	$-10 + -10$	(D) 16 (T) -8	11	$-8 + 18$	(N) 10 (W) -16								
	$17 + -1$	(R) -20 (B) -6		$6 + -19$	(F) 18 (S) -13								
	$-11 + 5$			$13 + 5$									
5	$4 + -9$	(A) 14 (O) 9	12	$11 + -2$	(L) 12 (E) 9								
	$-7 + -15$	(P) -22 (C) -5		$-7 + -4$	(D) -7 (T) -11								
	$-3 + 12$			$-15 + 8$									
6	$16 + -8$	(M) 8 (T) 15	13	$-6 + 12$	(P) -2 (G) 6								
	$-5 + 20$	(S) -4 (W) 0		$99 + -99$	(R) 0 (B) -4								
	$-6 + 6$			$3 + -5$									
7	$-13 + -4$	(F) -5 (Z) -17	14	$-20 + -30$	(Y) -50 (M) 50								
	$-7 + 2$	(E) -2 (O) 10		$70 1-40$	(N) 30 (T) -30								
	$14 + -16$			$-70 + 40$									
8	4	11	1	6	9	14	7	10	3	13	5	2	12

+ SUM UP +

Do any exercise below and find your answer in the code key. Notice the letter above it. Print this letter in the box at the bottom of the page that contains the number of the exercise. Keep working and you will create a special message.

CODE KEY

W	G	H	D	L	S	A	E	O	Y	I	U	T	C	M	R	P	N	F
-18	-15	-13	-10	-8	-7	-6	-4	-3	-1	0	2	3	4	5	7	8	14	17

① $-8 + 2 =$

② $6 + 8 =$

③ $5 + -9 =$

④ $-9 + 1 =$

⑤ $-3 + -1 =$

⑥ $-1 + 5 =$

⑦ $-3 + 6 =$

⑧ $9 + -2 =$

⑨ $-3 + 3 =$

⑩ $-5 + 9 =$

⑪ $-7 + -3 =$

⑫ $8 + -8 =$

⑬ $-1 + -6 =$

⑭ $-20 + 7 =$

⑮ $-9 + -9 =$

⑯ $-7 + 1 =$

⑰ $2 + -9 =$

⑱ $-9 + -4 =$

⑲ $-7 + 3 =$

⑳ $3 + 4 =$

㉑ $-7 + -8 =$

㉒ $4 + -8 =$

㉓ $-6 + 9 =$

㉔ $-10 + 3 =$

㉕ $6 + -7 =$

㉖ $-9 + 6 =$

㉗ $-3 + 5 =$

㉘ $2 + -5 =$

㉙ $-7 + 9 =$

㉚ $8 + -5 =$

㉛ $-1 + -2 =$

㉜ $8 + 9 =$

㉝ $-8 + 1 =$

㉞ $3 + -6 =$

㉟ $-2 + 7 =$

㊱ $-5 + 1 =$

㊲ $-1 + 4 =$

㊳ $4 + -7 =$

㊴ $-4 + 6 =$

㊵ $-9 + -6 =$

㊶ $7 + -20 =$

㊷ $-15 + 8 =$

㊸ $7 + -3 =$

㊹ $-1 + 8 =$

㊺ $3 + -9 =$

㊻ $-1 + 9 =$

㊼ $8 + -12 =$

㊽ $-3 + -4 =$

1	2	3	4	5	6	7	8	9	10	11	12	13	14	15	16	17	18	19	20	21	22	23	24
25	26	27	28	29	30	31	32	33	34	35	36	37	38	39	40	41	42	43	44	45	46	47	48